

Images

This may be used as an Import or an Export option.

The file looks like this:

code	image	alt	display	imagenumber	colour
1853	https://ixo.iconography.co.uk/images/products/large/1853_3654.jpg	banana	yes	1	Red
1853	https://ixo.iconography.co.uk/images/products/large/1853_410.jpg	peeled banana	yes	2	
1853	https://ixo.iconography.co.uk/images/products/large/1853_3645.jpg	test	no	3	Green
1855B-80716	https://ixo.iconography.co.uk/images/products/large/1855_415.jpg	Orange	yes	1	Blue
1855B-80716	https://ixo.iconography.co.uk/images/products/large/1855_416.jpg	Lemon	yes	2	
1855B-80716	https://ixo.iconography.co.uk/images/products/large/1855_414.jpg	Lime	no	3	
1855B-80717	https://ixo.iconography.co.uk/images/products/large/1855_415.jpg	Orange	yes	1	
1855B-80717	https://ixo.iconography.co.uk/images/products/large/1855_416.jpg	Lemon	yes	2	
1855B-80717	https://ixo.iconography.co.uk/images/products/large/1855_414.jpg	Lime	no	3	
1855B-80718Y	https://ixo.iconography.co.uk/images/products/large/1855_415.jpg	Orange	yes	1	
1855B-80718Y	https://ixo.iconography.co.uk/images/products/large/1855_416.jpg	Lemon	yes	2	
1855B-80718Y	https://ixo.iconography.co.uk/images/products/large/1855_414.jpg	Lime	no	3	
1864	https://ixo.iconography.co.uk/images/products/large/1864_422.jpg		yes	1	
1864	https://ixo.iconography.co.uk/images/products/large/1864_423.jpg		yes	2	
1864B	https://ixo.iconography.co.uk/images/products/large/1864_422.jpg		yes	1	
1864B	https://ixo.iconography.co.uk/images/products/large/1864_423.jpg		yes	2	

Export

Use the filters to narrow your selection, then click 'Export'. This will generate a file that will include all Images for Products that match your filters.

One Product may have multiple images, in which case these will be split over multiple lines.

- ↓ [Download product data as CSV](#)
- ↓ [Download category association data as CSV](#)
- ↓ [Download "made to order" options as CSV](#)
- ↓ [Download images as CSV](#)

Import

Make changes to the file and import it to update Products. If the image does not exist, a new one will be imported.

Field	Purpose
Code	<i>The SKU Code of the Variant to which the Images are linked</i>

Field	Purpose
Image	<p>The link to the image.</p> <p>If importing from a URL, enter the full URL, e.g. www.example.com/image.jpg</p> <p>If importing from the server via FTP, just enter the image name, e.g. image.jpg</p>
Alt	<p>The alt text for the image</p> <div style="background-color: #e0f2f7; padding: 5px; border: 1px solid #000; margin-top: 10px;"> <p>Defaults to the image name if not entered</p> </div>
Display	Enter 'yes' or 'no'
Image Number	<p>Used for image sequencing</p> <p>Enter a number</p> <p>New images are added in the same order as the spreadsheet</p>
Colour	<p>Use this to link a Colour to the image for eCommerce</p> <p>Filters</p>

Mapping

You will need to map your data before it can be imported. Included below is the optimal mapping/spreadsheet structure.

Mistakes made here may have serious impact on your Product database.

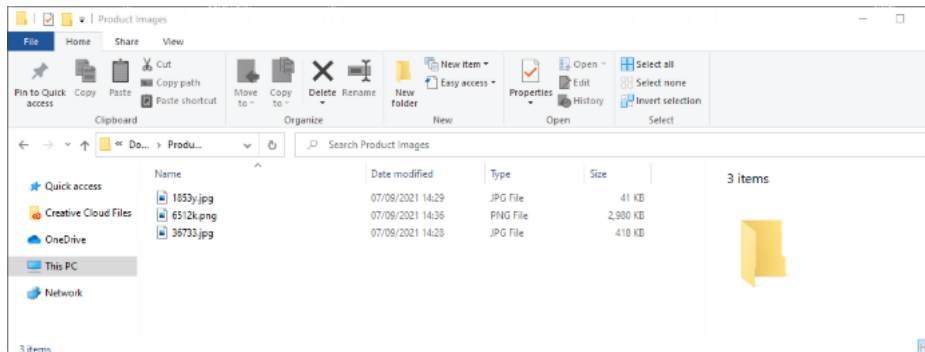
Images Import

Your CSV	Database
code	code ▼
image	image ▼
alt	alt ▼
display	display ▼
imagenumber	imagenumber ▼
colour	colour ▼

Adding Images via FTP

Step 1: Preparing your images for upload

To use the IXO images CSV upload your image files are required to be in a single folder, it is also recommended that you name your image files as the product SKU to make Step 2 easier.



Step 2: Creating the images CSV file

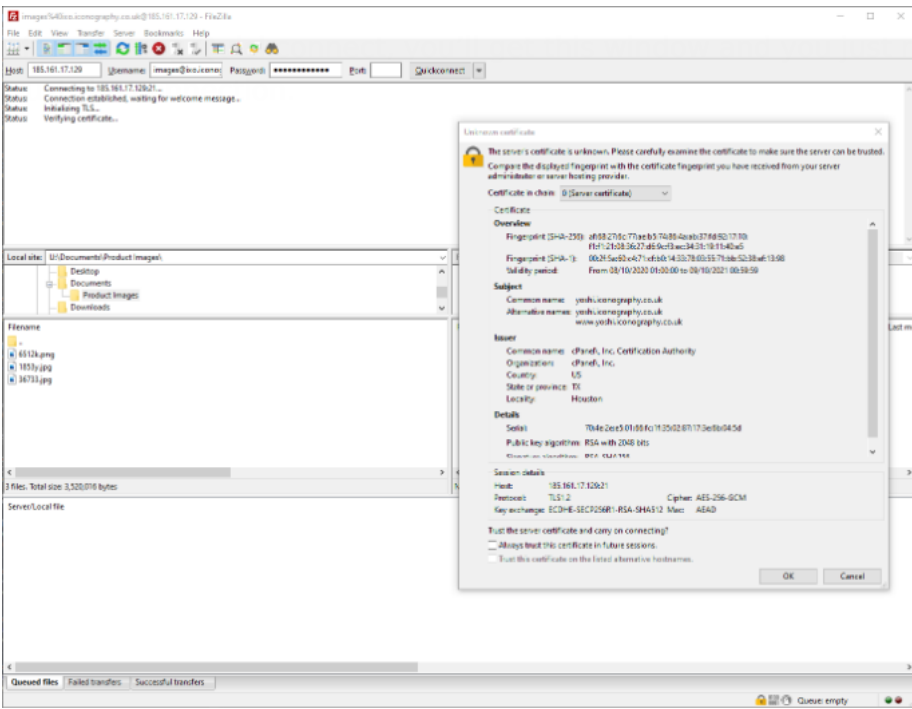
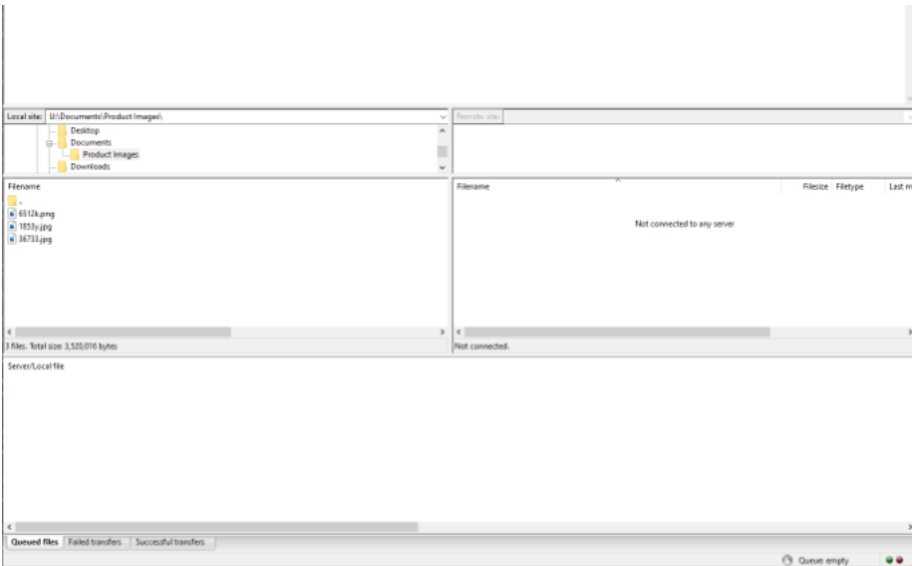
Fill out the example images CSV file provided by Iconography along with this guide as per the example line in the CSV.

Ensure the “image” field is filled with the file name and file type (png or jpg) exactly as it is in the folder you prepared in Step 1.

Step 3: Uploading your images

Upon opening FileZilla (free to download if not already using this system <https://filezilla-project.org/download.php?type=client>) you’ll see this screen.

The login fields are at the top to enter the details provided by Iconography along with this guide (contact us if you do not have logins).



need to click 'OK' to confirm you

You'll then be logged in and can see any image files already on the server on the bottom right box and files on your computer bottom left box.

